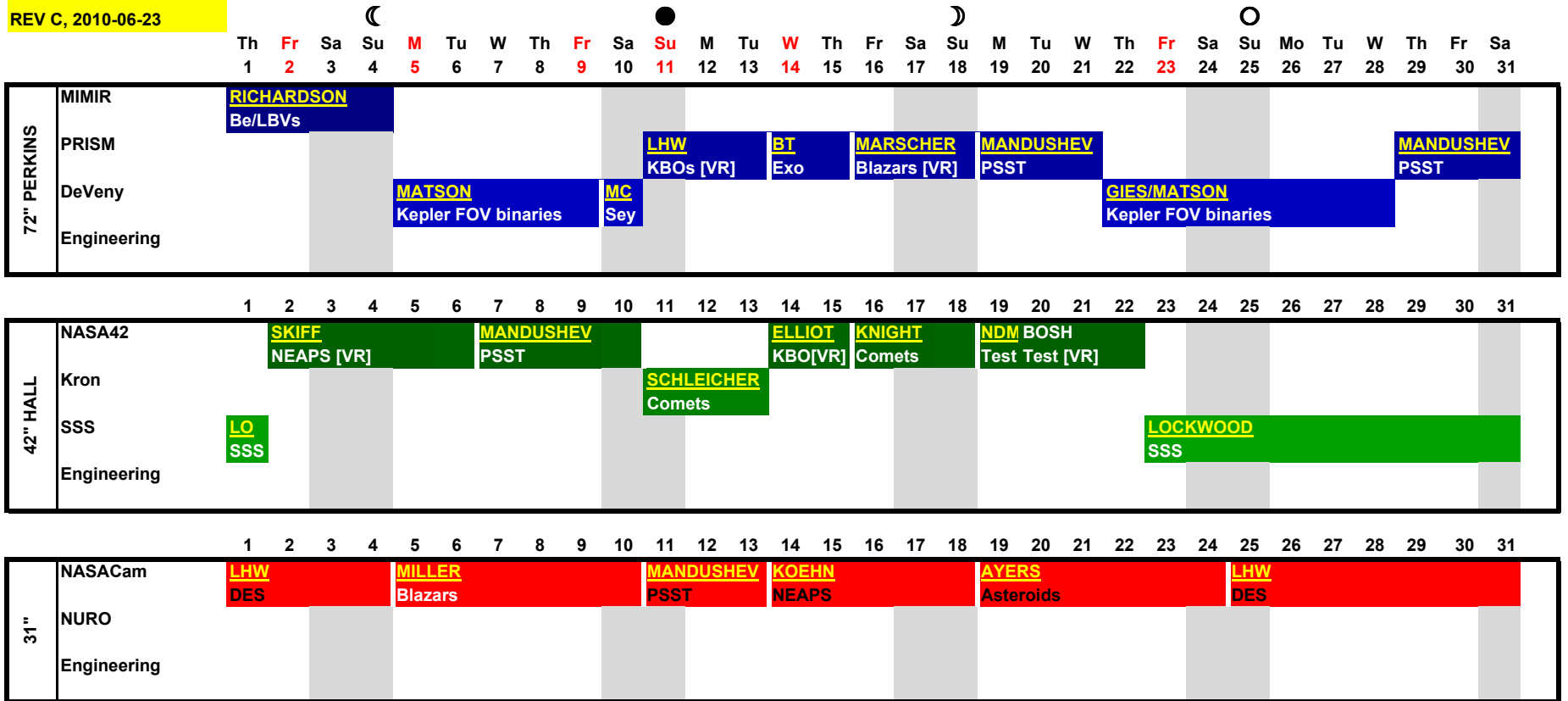


July 2010

REV C, 2010-06-23



Notes

- A. Dates marked in red show instrument change days (for any of the telescopes). Total in July: 8
- B. Names underlined in yellow indicate certified (or certified observer listed on observing request).
- C. Program names in black on the 31" are robo mode, and those are considered certified runs.
- D. "NDM" (Neugent/Dunham/Massey) and BOSH both request testing time on the 42", and these runs are (hopefully conveniently) juxtaposed.
- E. Dotted fill on PRISM nights indicates open time.