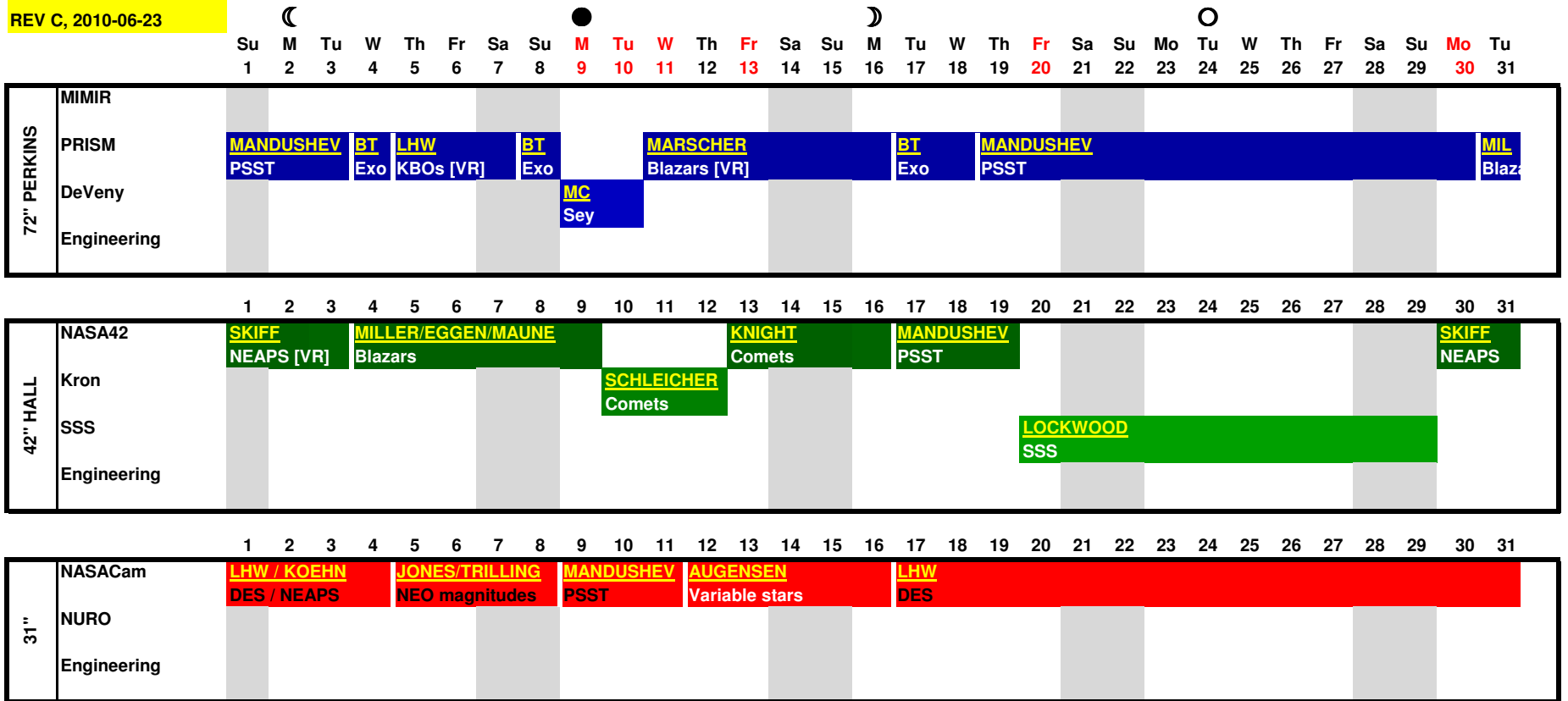


August 2010

REV C, 2010-06-23



Notes

- A. Dates marked in red show instrument change days (for any of the telescopes). Total in August: 6
- B. Names underlined in yellow indicate certified (or certified observer listed on observing request).
- C. Program names in black on the 31" are robo mode, and those observers are considered certified.
- D. Dotted fill on PRISM nights indicates open time.